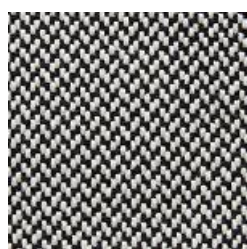
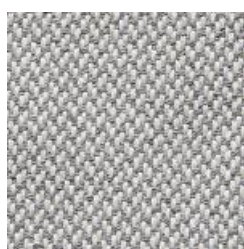


## CENTO



470



471



472

## CENTO

### EN

Composition: 85% Cotton, 15% Polyester  
Maintenance: Vacuum regularly or professional Dry-clean  
Abrasion Resistance: 35.000 Martindale cycles  
Flammability: EN 1021 part 1&2

### DE

Zusammensetzung: 85% Baumwolle, 15% Polyester  
Reinigung: Regelmässig staubsaugen. Professionelle Trockenreinigung  
Scheuerfestigkeit: 35.000 Martindale  
Feuerschutz: EN 1021 part 1&2

### FR

Composition: 85% Coton, 15% Polyester  
Nettoyage: Aspirer régulièrement. Nettoyage á sec professionnel  
Résistance á l'abrasion: 35.000 cycles Martindale  
Normes au feu: EN 1021 source d'ignition 1&2

### DK

Materiale: 85% Bomuld, 15% Polyester  
Rengøring: Støvsug regelmæssigt eller professionel rens  
Slidstyrke: 35.000 Martindale  
Flammesikring: EN 1021 part 1&2