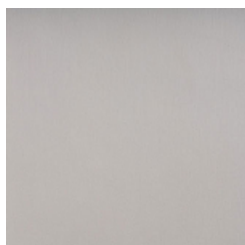
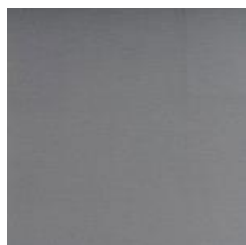


TEMPO / SILVERTEX



273



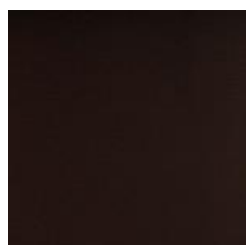
274



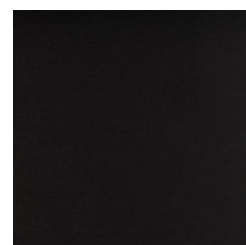
988-JL



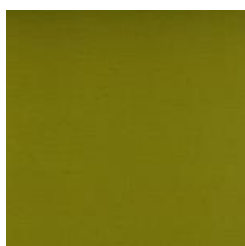
276



279



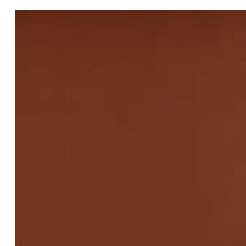
275



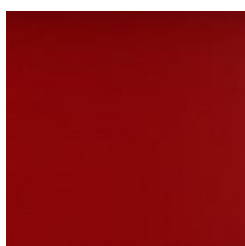
271



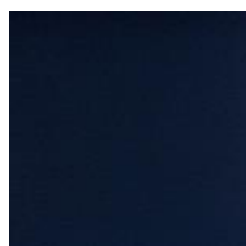
999-SS



999-SE



277



278

TEMPO / SILVERTEX

EN

Composition: 100% Vinyl
Backing: 100% Polyester
Maintenance: Vacuum regularly, professional Dry-clean or wipe with a damp cloth
Abrasion Resistance: 300.000 Martindale cycles
Flammability: EN 1021 part 1&2
NF P92-503 / M2

DE

Zusammensetzung: 100% Vinyl
Rückseite: 100% Polyester
Reinigung: Regelmässig staubsaugen. Professionelle Trockenreinigung
Alternativ dazu mit einem feuchten abwischen
Scheuerfestigkeit: 300.000 Martindale
Feuerschutz: EN 1021 part 1&2
NF P92-503 / M2

FR

Composition: 100% Vinyl
Backing: 100% Polyester
Nettoyage: Aspirer régulièrement. Nettoyage á sec professionnel,
sinon essuyer avec un linge humide
Résistance á l'abrasion: 300.000 cycles Martindale
Normes au feu: EN 1021 part 1&2
NF P92-503 / M2

DK

Materiale: 100% Vinyl
Backing: 100% Polyester
Rengøring: Støvsug regelmæssigt, professionel rens eller tør med en fugtig klud
Slidstyrke: 300.000 Martindale
Flammesikring: EN 1021 part 1&2
NF P92-503 / M2

Reference TEMPO / SILVERTEX

271 TEMPO / SILVERTEX 122-5008 Pistacho
273 TEMPO / SILVERTEX 122-4004 Ice
274 TEMPO / SILVERTEX 122-4001 Plata
275 TEMPO / SILVERTEX 122-9002 Carbon
276 TEMPO / SILVERTEX 122-0009 Taupe
277 TEMPO / SILVERTEX 122-2011 Red
278 TEMPO / SILVERTEX 122-3007 Sapphire
279 TEMPO / SILVERTEX 122-4024 Meteor
999-SE TEMPO / SILVERTEX 122-1014 Umber
988-JL TEMPO / SILVERTEX 122-4011 Sterling
999-SS TEMPO / SILVERTEX 122-5020 Basil